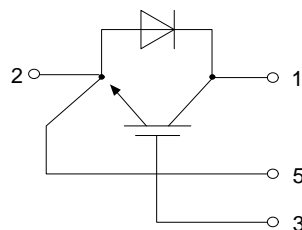
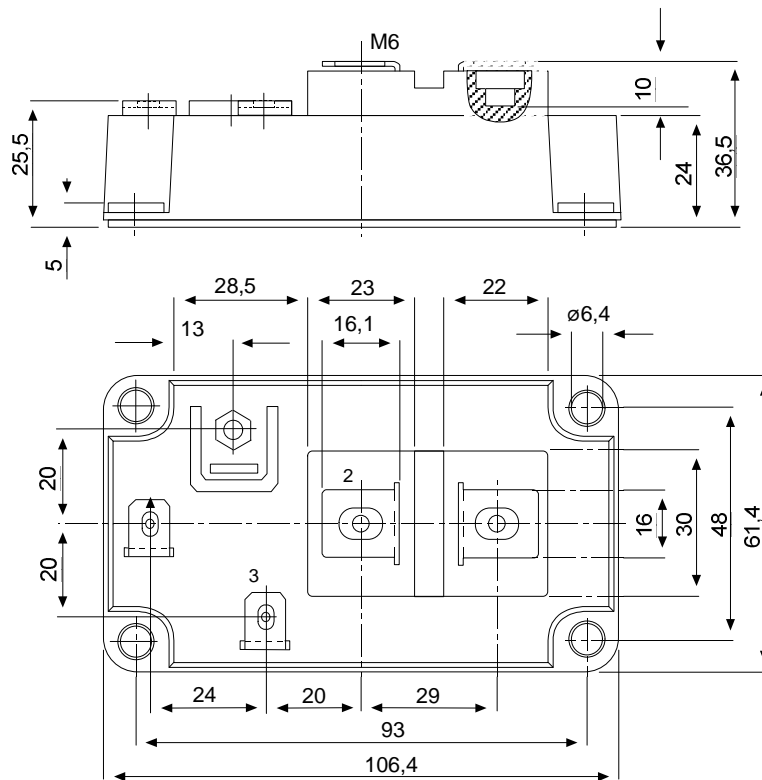




European Power-Semiconductor and Electronics Company

# Marketing Information

## BSM 300 GA 170 DL



# BSM 300 GA 170 DL

## Höchstzulässige Werte / Maximum rated values

### Elektrische Eigenschaften / Electrical properties

		vorläufige Daten preliminary data	
Kollektor-Emitter-Sperrspannung	collector-emitter voltage	$V_{CES}$	1700 V
Kollektor-Dauergleichstrom	DC-collector current	$I_{C,nom.}$	300 A
		$T_C = 80^\circ C$	
		$T_C = 25^\circ C$	600 A
Periodischer Kollektor Spitzenstrom	repetitive peak collector current	$t_p = 1 \text{ ms}, T_C = 80^\circ C$	$I_{CRM}$ 600 A
Gesamt-Verlustleistung	total power dissipation	$T_C = 25^\circ C, \text{ Transistor}$	$P_{tot}$ 2500 W
Gate-Emitter-Spitzenspannung	gate-emitter peak voltage		$V_{GES}$ $\pm 20 \text{ V}$
Dauergleichstrom	DC forward current		$I_F$ 300 A
Periodischer Spitzenstrom	repetitive peak forw. current	$t_p = 1 \text{ ms}$	$I_{FRM}$ 600 A
Grenzlastintegral der Diode	$I^2t$ - value, Diode	$V_R = 0V, t_p = 10\text{ms}, T_{vj} = 125^\circ C$	$I^2t$ 29000 A <sup>2</sup> s
Isolations-Prüfspannung	insulation test voltage	RMS, f = 50 Hz, t = 1 min.	$V_{ISOL}$ 3,4 kV

### Charakteristische Werte / Characteristic values: Transistor

		min. typ. max.		
Kollektor-Emitter Sättigungsspannung	collector-emitter saturation voltage	$I_C = 300A, V_{GE} = 15V, T_{vj} = 25^\circ C$	$V_{CE \text{ sat}}$	- 2,7 3,3 V
		$I_C = 300A, V_{GE} = 15V, T_{vj} = 125^\circ C$		- 3,2 - V
Gate-Schwellenspannung	gate threshold voltage	$I_C = 14\text{mA}, V_{CE} = V_{GE}, T_{vj} = 25^\circ C$	$V_{GE(th)}$	4,5 5,5 6,5 V
Eingangskapazität	input capacitance	f = 1MHz, $T_{vj} = 25^\circ C, V_{CE} = 25V, V_{GE} = 0V$	$C_{ies}$	- 20 - nF
Kollektor-Emitter Reststrom	collector-emitter cut-off current	$V_{CE} = 1700V, V_{GE} = 0V, T_{vj} = 25^\circ C$	$I_{CES}$	- 0,1 0,6 mA
		$V_{CE} = 1700V, V_{GE} = 0V, T_{vj} = 125^\circ C$		- 8 - mA
Gate-Emitter Reststrom	gate-emitter leakage current	$V_{CE} = 0V, V_{GE} = 20V, T_{vj} = 25^\circ C$	$I_{GES}$	- - 200 nA
Einschaltverzögerungszeit (induktive Last)	turn-on delay time (inductive load)	$I_C = 300A, V_{CE} = 900V$	$t_{d,on}$	- - -
		$V_{GE} = \pm 15V, R_G = 5\Omega, T_{vj} = 25^\circ C$		- 0,1 - $\mu s$
		$V_{GE} = \pm 15V, R_G = 5\Omega, T_{vj} = 125^\circ C$		- 0,1 - $\mu s$
Anstiegszeit (induktive Last)	rise time (inductive load)	$I_C = 300A, V_{CE} = 900V$	$t_r$	- - -
		$V_{GE} = \pm 15V, R_G = 5\Omega, T_{vj} = 25^\circ C$		- 0,1 - $\mu s$
		$V_{GE} = \pm 15V, R_G = 5\Omega, T_{vj} = 125^\circ C$		- 0,1 - $\mu s$
Abschaltverzögerungszeit (ind. Last)	turn off delay time (inductive load)	$I_C = 300A, V_{CE} = 900V$	$t_{d,off}$	- - -
		$V_{GE} = \pm 15V, R_G = 5\Omega, T_{vj} = 25^\circ C$		- 0,8 - $\mu s$
		$V_{GE} = \pm 15V, R_G = 5\Omega, T_{vj} = 125^\circ C$		- 0,9 - $\mu s$
Fallzeit (induktive Last)	fall time (inductive load)	$I_C = 300A, V_{CE} = 900V$	$t_f$	- - -
		$V_{GE} = \pm 15V, R_G = 5\Omega, T_{vj} = 25^\circ C$		- 0,03 - $\mu s$
		$V_{GE} = \pm 15V, R_G = 5\Omega, T_{vj} = 125^\circ C$		- 0,03 - $\mu s$
Einschaltverlustenergie pro Puls	turn-on energy loss per pulse	$I_C = 300A, V_{CE} = 900V, V_{GE} = 15V$	$E_{on}$	- 130 - mWs
		$R_G = 5\Omega, T_{vj} = 125^\circ C, L_S = 60\text{nH}$		- - -
Abschaltverlustenergie pro Puls	turn-off energy loss per pulse	$I_C = 300A, V_{CE} = 900V, V_{GE} = 15V$	$E_{off}$	- 95 - mWs
		$R_G = 5\Omega, T_{vj} = 125^\circ C, L_S = 60\text{nH}$		- - -
Kurzschlußverhalten	SC Data	$t_p \leq 10\mu\text{sec}, V_{GE} \leq 15V, R_G = 5\Omega$	$I_{SC}$	- 1200 - A
		$T_{vj} \leq 125^\circ C, V_{CC} = 1000V$		- - -
		$V_{CEmax} = V_{CES} - L_{sCE} \times di/dt$		- - -
Modulinduktivität	stray inductance module		$L_{sCE}$	- 15 - nH

### Charakteristische Werte / Characteristic values: Diode

Durchlaßspannung	forward voltage	$I_F = 300A, V_{GE} = 0V, T_{vj} = 25^\circ C$	$V_F$	- 2,2 2,6 V
		$I_F = 300A, V_{GE} = 0V, T_{vj} = 125^\circ C$		- 2 - V
Rückstromspitze	peak reverse recovery current	$I_F = 300A, -di_F/dt = 4500A/\mu\text{sec}$	$I_{RM}$	- 220 - A
		$V_R = 900V, V_{GE} = -10V, T_{vj} = 25^\circ C$		- 330 - A
		$V_R = 900V, V_{GE} = -10V, T_{vj} = 125^\circ C$		- - -
Sperrverzögerungsladung	recovered charge	$I_F = 300A, -di_F/dt = 4500A/\mu\text{sec}$	$Q_r$	- 34 - $\mu\text{As}$
		$V_R = 900V, V_{GE} = -10V, T_{vj} = 25^\circ C$		- 75 - $\mu\text{As}$
		$V_R = 900V, V_{GE} = -10V, T_{vj} = 125^\circ C$		- - -
Abschaltenergie pro Puls	reverse recovery energy	$I_F = 300A, -di_F/dt = 4500A/\mu\text{sec}$	$E_{rec}$	- 16 - mWs
		$V_R = 900V, V_{GE} = -10V, T_{vj} = 25^\circ C$		- 31 - mWs
		$V_R = 900V, V_{GE} = -10V, T_{vj} = 125^\circ C$		- - -

### Thermische Eigenschaften / Thermal properties

Innerer Wärmewiderstand	thermal resistance, junction to case	Transistor / transistor, DC	$R_{thJC}$	- - 0,05 K/W
		Diode / diode, DC		- - 0,12 K/W
Übergangs-Wärmewiderstand	thermal resistance, case to heatsink	pro Module / per Module	$R_{thCK}$	- - 0,012 K/W
		$d_{paste} \leq 50\mu\text{m} / d_{grease} \leq 50\mu\text{m}$		- - -
Höchstzul. Sperrschichttemperatur	max. junction temperature		$T_{vj}$	- - 150 $^\circ C$
Betriebstemperatur	operating temperature		$T_{op}$	-40 - 125 $^\circ C$
Lagertemperatur	storage temperature		$T_{stg}$	-40 - 125 $^\circ C$

### Mechanische Eigenschaften / Mechanical properties

Innere Isolation	internal insulation			$Al_2O_3$
Kriechstrecke	creepage distance			20 mm
Luftstrecke	clearance			11 mm
CTI	comperative tracking index			
Anzugsdrehmoment f. mech. Befestigung	mounting torque		max.	5 Nm
Anzugsdrehmoment f. elektr. Anschlüsse	terminal connection torque	terminals M4	max.	2 Nm
		terminals M6	max.	5 Nm
Gewicht	weight		G	420 g

Mit dieser technischen Information werden Halbleiterbauelemente spezifiziert, jedoch keine Eigenschaften zugesichert. Sie gilt in Verbindung mit den zugehörigen Technischen Erläuterungen.  
This technical information specifies semiconductor devices but promises no characteristics. It is valid in combination with the belonging technical notes.

# BSM 300 GA 170 DL

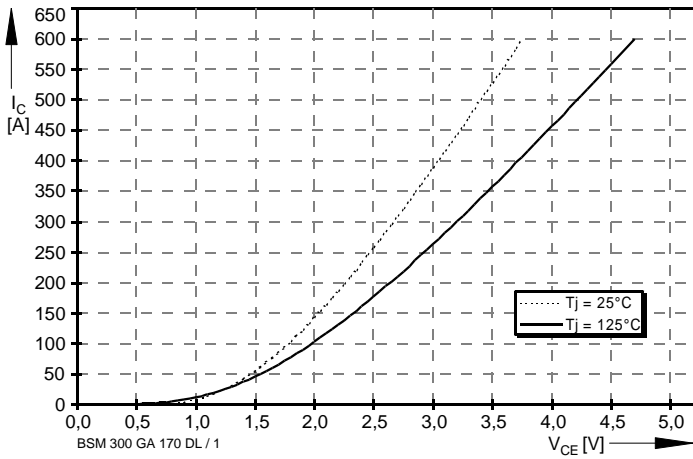


Bild / Fig. 1  
Ausgangskennlinie (typisch) /  
Output characteristic (typical)  
 $I_C = f(V_{CE})$   
 $V_{GE} = 15V$

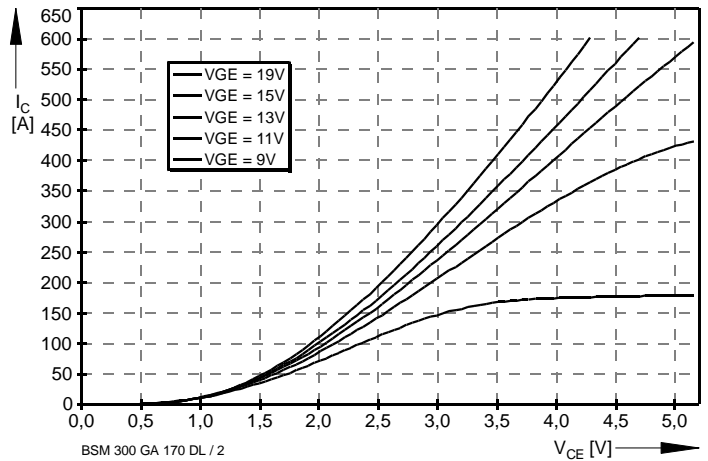


Bild / Fig. 2  
Ausgangskennlinienfeld (typisch) /  
Output characteristic (typical)  
 $I_C = f(V_{CE})$   
 $T_{vj} = 125^\circ C$

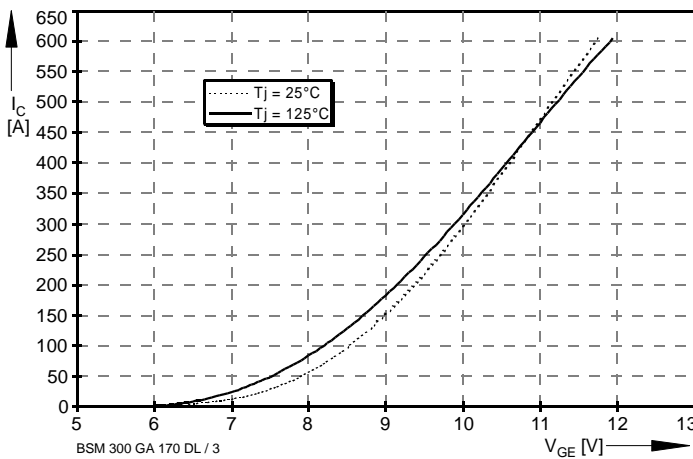


Bild / Fig. 3  
Übertragungscharakteristic (typisch) /  
Transfer characteristic (typical)  
 $I_C = f(V_{GE})$   
 $V_{CE} = 20V$

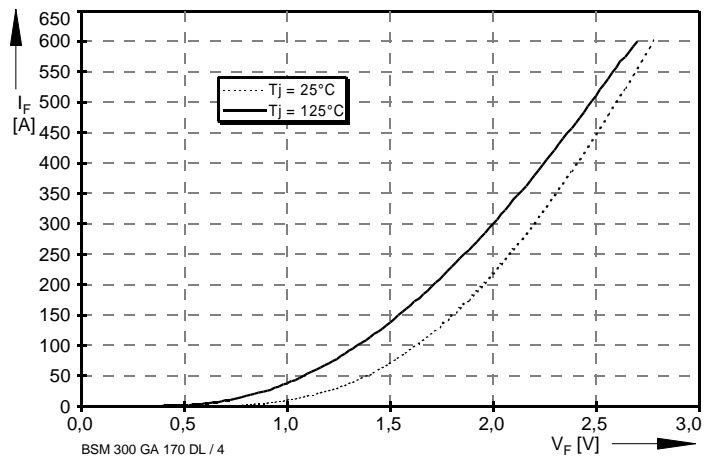


Bild / Fig. 4  
Durchlaßkennlinie der Inversdiode (typisch) /  
Forward characteristic of inverse diode (typical)  
 $I_F = f(V_F)$

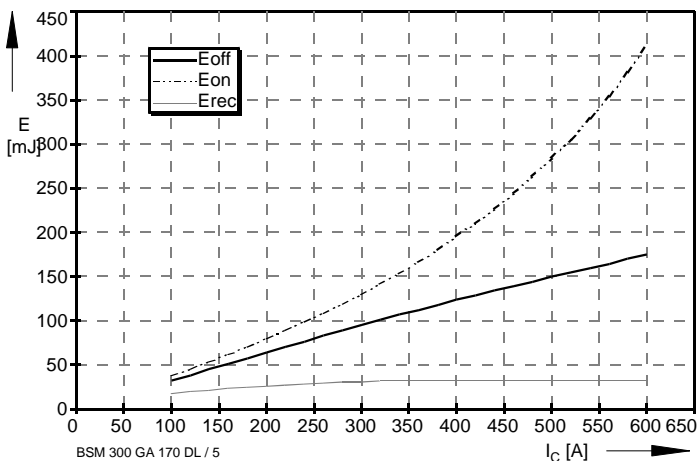


Bild / Fig. 5  
Schaltverluste (typisch) /  
Switching losses (typical)  
 $E_{on} = f(I_C)$ ,  $E_{off} = f(I_C)$ ,  $E_{rec} = f(I_C)$   
 $R_{gon} = R_{goff} = 5\Omega$ ,  $V_{CE} = 900V$ ,  $T_j = 125^\circ C$

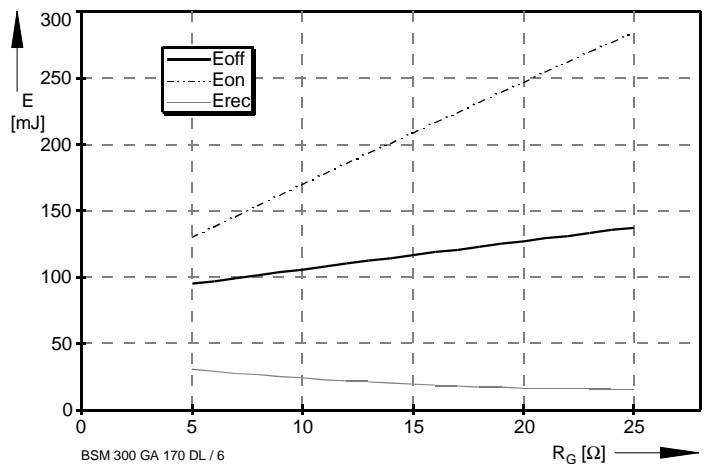


Bild / Fig. 6  
Schaltverluste (typisch) /  
Switching losses (typical)  
 $E_{on} = f(R_G)$ ,  $E_{off} = f(R_G)$ ,  $E_{rec} = f(R_G)$   
 $I_C = 300A$ ,  $V_{CE} = 900V$ ,  $T_j = 125^\circ C$

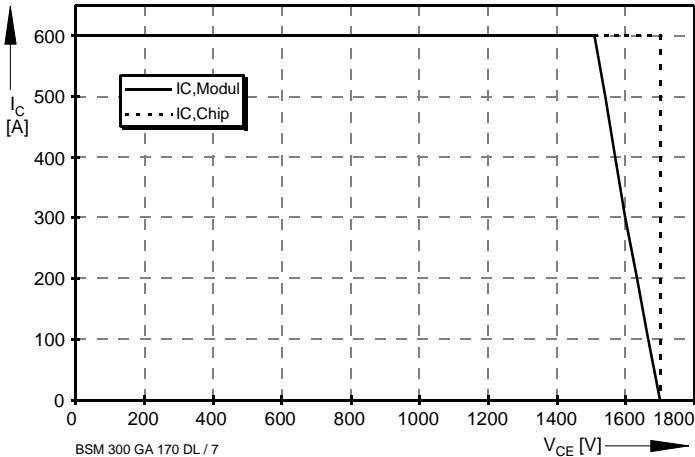


Bild / Fig. 7  
Sicherer Arbeitsbereich (RBSOA) /  
Reverse bias safe operation area (RBSOA)  
 $R_g = 5\Omega, T_{vj} = 125^\circ\text{C}$