



MAK 74/WS

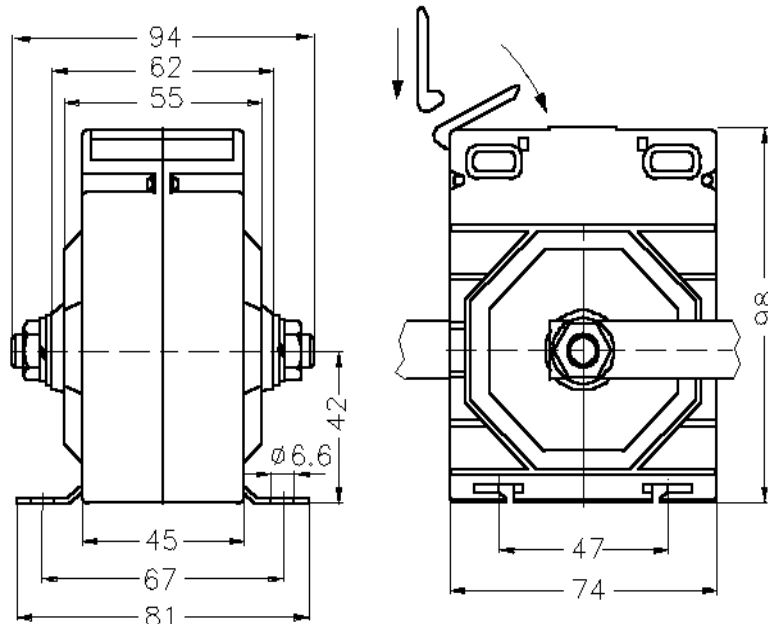
For currents from 1A to 250 A
The current transformers are made according to BS 3938, EN 60044-1

Technical data

Class of accuracy: 0.2S... 1 (see table).
Rated burden: max. 20 VA (see table).
Rated voltage: 720 V.
Rated frequency: 50-60 Hz.
Rated sec. current: 5 A (or 1 A on request).
Security factor: FS 5 FS10
Working temperature range: -20 ... +45 °C.
Insulation class: E (max. 120°C)
High voltage test: 4kV_{eff}, 50 Hz, 1 min.
Protection: IP 00.
Case: non-flammable plastic, UL 94 V-0



Outline drawing of 74/WS
Dimensions in mm



Weight: 520 600 gr

Order specification:

- Current transformer with primary winding
- Class of accuracy: 1
- Rated primary current: 200 A.
- Rated secondary current: 5 A.
- Rated burden: 20 VA

MAK 74/WS 200/5 A Cl.1 20 VA

Note:

- On request orders for types different from table are accepted.
 - On request order for clip for DIN EN 50 022 rail are accepted.
- Cat. No. **12-3044-94.**

Different types of MAK 74/WS current transformers see table on next page



Rated primary current I_n	Acc. class	Type: MAK 74 / WS						Busbar mount
		Rated burden [VA]						
		1	5	7,5	10	15	20	
1 A	0,2S	x						M8
	0,5S		x	x				
	0,2		x		x			
	0,5		x		x	x	x	
2,5 A	1		x		x	x	x	
	0,2S	x						
	0,5S		x	x				
	0,2		x		x			
5 A	0,5		x		x	x	x	
	1		x		x	x	x	
	0,2S	x						
	0,5S		x	x				
7,5 A	0,2		x		x			
	0,5		x		x	x	x	
	1		x		x	x	x	
	0,2S	x						
10 A	0,5S		x	x				
	0,2		x		x			
	0,5		x		x	x	x	
	1		x		x	x	x	
15 A	0,2S	x						
	0,5S		x	x				
	0,2		x		x			
	0,5		x		x	x	x	
20 A	1		x		x	x	x	
	0,2S	x						
	0,5S		x	x				
	0,2		x		x			
25 A	0,5		x		x	x	x	
	1		x		x	x	x	
	0,2S	x						
	0,5S		x	x				
30 A	0,2		x		x			
	0,5		x		x	x	x	
	1		x		x	x	x	
	0,2S	x						
40 A	0,5S		x	x				
	0,2		x		x			
	0,5		x		x	x	x	
	1		x		x	x	x	
50 A	0,2S	x						
	0,5S		x	x				
	0,2		x		x			
	0,5		x		x	x	x	
50 A	1		x		x	x	x	



CURRENT TRANSFORMERS WITH PRIMARY WINDING



Rated primary current I_n	Acc. class	Type: MAK 74 / WS						Busbar mount
		Rated burden [VA]						
		1	5	7,5	10	15	20	
60 A	0,2S	x						M10
	0,5S		x	x				
	0,2		x		x			
	0,5		x		x	x	x	
75 A	0,2S	x						
	0,5S		x	x				
	0,2		x		x			
	0,5		x		x	x	x	
80 A	0,2S	x						
	0,5S		x	x				
	0,2		x		x			
	0,5		x		x	x	x	
100 A	0,2S	x						
	0,5S		x	x				
	0,2		x		x			
	0,5		x		x	x	x	
125 A	0,2S	x						
	0,5S		x	x				
	0,2		x		x			
	0,5		x		x	x	x	
150 A	0,2S	x						
	0,5S		x	x				
	0,2		x		x			
	0,5		x		x	x		
200 A	0,2S	x						
	0,5S		x	x				
	0,2		x		x			
	0,5		x		x	x	x	
250 A	0,2S	x						
	0,5S		x	x				
	0,2		x		x			
	0,5		x		x	x	x	
250 A	0,2S							
	0,5S		x	x				
	0,2		x		x			
	0,5		x		x	x	x	
250 A	0,2S							
	0,5S		x	x				
	0,2		x		x			
	0,5		x		x	x	x	