



# CURRENT TRANSFORMERS WITH TRANSDUCER



## CTC 104/60H

Two in one: combination of current transformer and electronic transducer. The two components are built into the same case. The C.T. provides a galvanic isolation between the sensing circuit, the electronic circuit and mains.

### Technical data:

<b>Class of accuracy:</b>	0.5
<b>Input:</b>	100...1000 A AC
<b>Rated voltage:</b>	720 V.
<b>Output (DC):</b>	20 mA   4...20 mA   10 V
<b>Rated burden:</b>	$R_L=0...200 \Omega$   $R_L > 2 k$
<b>Mains:</b>	230 V $\pm$ 10%
<b>Rated frequency:</b>	50-60 Hz.
<b>Working temperature range:</b>	0 ... +45°C.
<b>High voltage test:</b>	4 kV <sub>eff</sub> , 50 Hz, 1 min.
<b>Insulation class:</b>	E (max. 120°C)
<b>Protection:</b>	IP 00.
<b>Case:</b>	non-flammable plastic, UL 94 V-0.

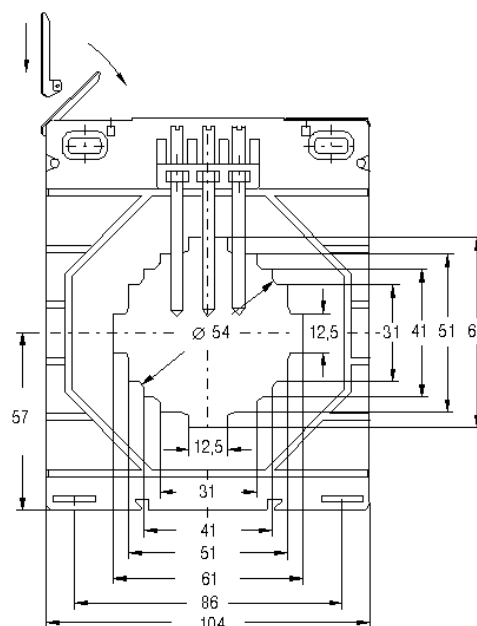
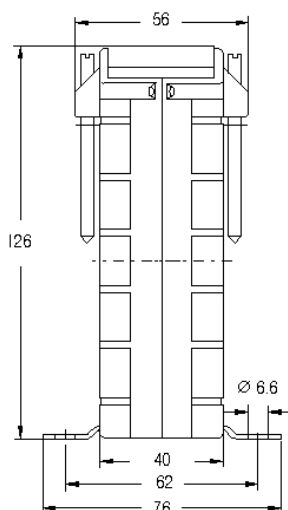
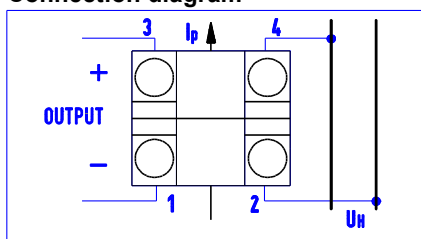


CTC 104/60H					
INPUT	OUTPUT	INPUT	OUTPUT	INPUT	OUTPUT
100 A	4 ... 20 mA	250 A	4 ... 20 mA	600 A	4 ... 20 mA
	0 ... 20 mA		0 ... 20 mA		0 ... 20 mA
	0 ... 10 V		0 ... 10 V		0 ... 10 V
125 A	4 ... 20 mA	300 A	4 ... 20 mA	750 A	4 ... 20 mA
	0 ... 20 mA		0 ... 20 mA		0 ... 20 mA
	0 ... 10 V		0 ... 10 V		0 ... 10 V
150 A	4 ... 20 mA	400 A	4 ... 20 mA	800 A	4 ... 20 mA
	0 ... 20 mA		0 ... 20 mA		0 ... 20 mA
	0 ... 10 V		0 ... 10 V		0 ... 10 V
200 A	4 ... 20 mA	500 A	4 ... 20 mA	1000 A	4 ... 20 mA
	0 ... 20 mA		0 ... 20 mA		0 ... 20 mA
	0 ... 10 V		0 ... 10 V		0 ... 10 V

Outline drawing

Dimensions in mm

Connection diagram



### Order specification:

AC current transformer with transducer  
 Input current: 1000 A  
 Output: 4...20 mA  
 Class of accuracy: 0.5

**CTC 104/60H 1000A 4...20 mA Cl. 0.5**

### Note:

- On request orders for types different from table are accepted.
  - On request order for clip for DIN EN 50 022 rail are accepted.
- Cat. No. 12-3044-94.

Weight: 600-710 gr