

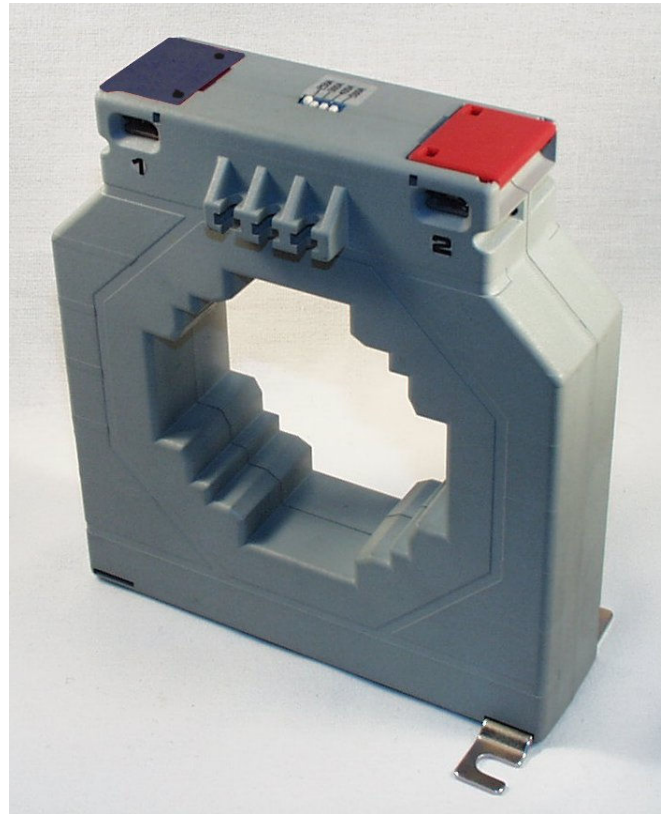


CTC 140/80H-sw

Combined current transformer and an electronic transducer. The two components are built into the same case. The measuring range can be changed by a **DIP-switch**. The C.T. provides a galvanic isolation between the supply, input and output.

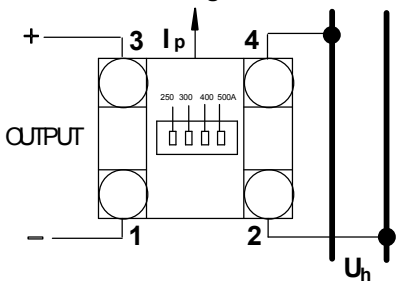
Technical data:

Class of accuracy:	0.5
Rated voltage:	720 V
Output (DC):	20 mA, 4...20 mA, 10 V
Rated burden:	$R_L = 0...200 \Omega$, $R_L > 2 k$
Power supply:	230 V \pm 10%
Rated frequency:	50...60 Hz
Working temperature range:	0...+45°C
High voltage test:	4 kV _{eff} , 50 Hz, 1 min.
Insulation class:	E (max. 120°C)
Protection:	IP 00
Case:	non-flammable plastic, UL 94 V-0



CTC 140/80H-sw	
CURRENT RANGE	OUTPUT
250A - 300A - 400A - 500A	4...20 mA
	0...20 mA
	0...10 V
600A - 700A - 800A - 1000A	4...20 mA
	0...20 mA
	0...10 V
1250A - 1500A - 1600A -2000A	4...20 mA
	0...20 mA
	0...10 V

Connection diagram

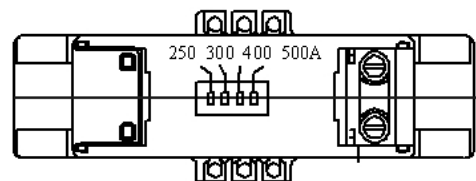
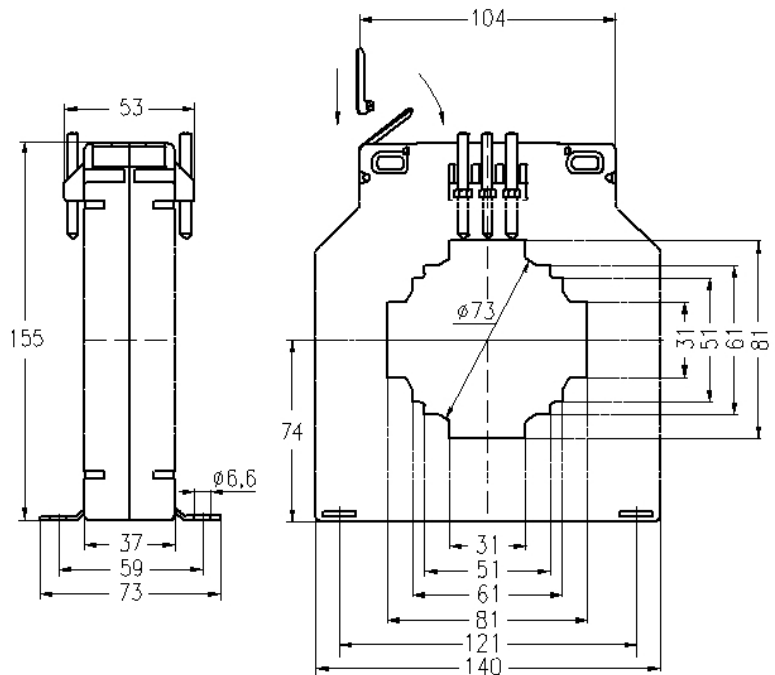


Order specification:

Current transformer with transducer and DIP-switch
 Input current: 250 - 300 - 400 - 500 A
 Output: 4...20 mA
 Class of accuracy: 0.5

CTC 140/80H-sw 250 - 300 - 400 - 500 A 4...20 mA Cl. 0.5

Outline drawing
Dimensions in mm



Note:
On request orders for types different from table are accepted.

Weight: 950...1150gr