



# CURRENT TRANSFORMERS WITH TRANSDUCER

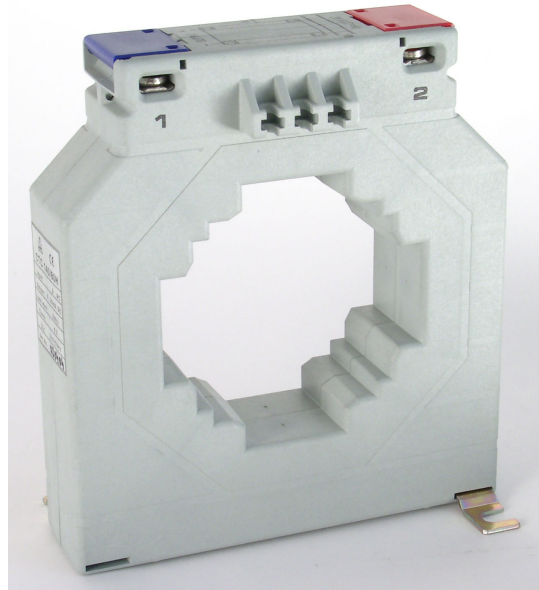


## CTC 140/80H

Two in one: combination of current transformer and electronic transducer.  
 The two components are built into the same case.  
 The C.T. provides a galvanic isolation between the sensing circuit, the electronic circuit and mains.

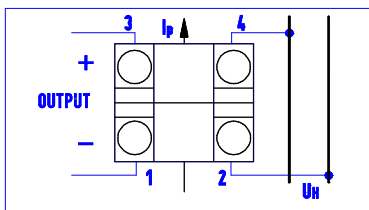
### Technical data:

<b>Class of accuracy:</b>	0.5			
<b>Input:</b>	250...2000 A AC			
<b>Rated voltage:</b>	720 V.			
<b>Output (DC):</b>	<table border="1" style="display: inline-table; border-collapse: collapse;"> <tr> <td>0...20 mA</td> <td>4...20 mA</td> <td>0...10 V</td> </tr> </table>	0...20 mA	4...20 mA	0...10 V
0...20 mA	4...20 mA	0...10 V		
<b>Rated burden:</b>	<table border="1" style="display: inline-table; border-collapse: collapse;"> <tr> <td><math>R_L=0...200 \Omega</math></td> <td><math>R_L &gt; 2 k</math></td> </tr> </table>	$R_L=0...200 \Omega$	$R_L > 2 k$	
$R_L=0...200 \Omega$	$R_L > 2 k$			
<b>Mains:</b>	230 V $\pm$ 10%			
<b>Rated frequency:</b>	50-60 Hz.			
<b>Working temperature range:</b>	0 ... +45°C.			
<b>High voltage test:</b>	4 kV <sub>eff</sub> , 50 Hz, 1 min.			
<b>Insulation class:</b>	E (max. 120°C)			
<b>Protection:</b>	IP 00.			
<b>Case:</b>	non-flammable plastic, UL 94 V-0.			

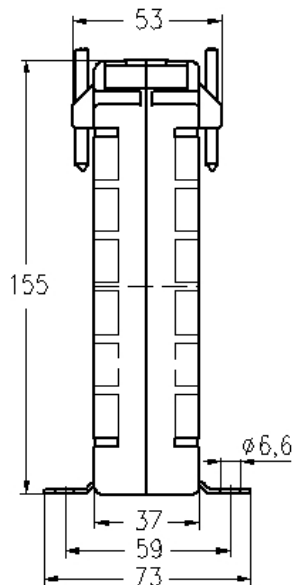


CTC 140/80H					
INPUT	OUTPUT	INPUT	OUTPUT	INPUT	OUTPUT
250 A	4 ... 20 mA	600 A	4 ... 20 mA	1250 A	4 ... 20 mA
	0 ... 20 mA		0 ... 20 mA		0 ... 20 mA
	0 ... 10 V		0 ... 10 V		0 ... 10 V
300 A	4 ... 20 mA	750 A	4 ... 20 mA	1500 A	4 ... 20 mA
	0 ... 20 mA		0 ... 20 mA		0 ... 20 mA
	0 ... 10 V		0 ... 10 V		0 ... 10 V
400 A	4 ... 20 mA	800 A	4 ... 20 mA	1600 A	4 ... 20 mA
	0 ... 20 mA		0 ... 20 mA		0 ... 20 mA
	0 ... 10 V		0 ... 10 V		0 ... 10 V
500 A	4 ... 20 mA	1000 A	4 ... 20 mA	2000 A	4 ... 20 mA
	0 ... 20 mA		0 ... 20 mA		0 ... 20 mA
	0 ... 10 V		0 ... 10 V		0 ... 10 V

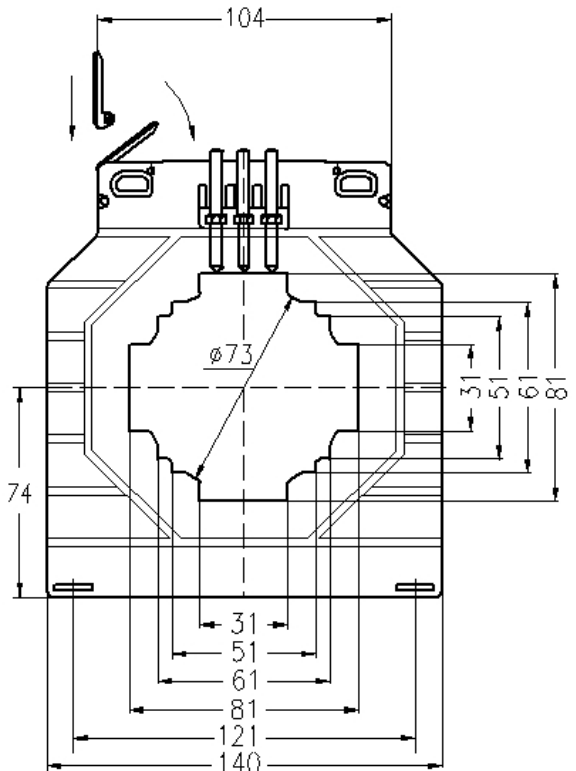
Connection diagram



Outline drawing



Dimension in mm.



### Order specification:

AC current transformer with transducer  
 Input current: 1500 A  
 Output: 4...20 mA  
 Class of accuracy: 0.5

CTC 140/80H 1500 A 4...20 mA Cl. 0.5

### Note:

On request orders for types different from table are accepted.

**Weight:** 900...1500gr